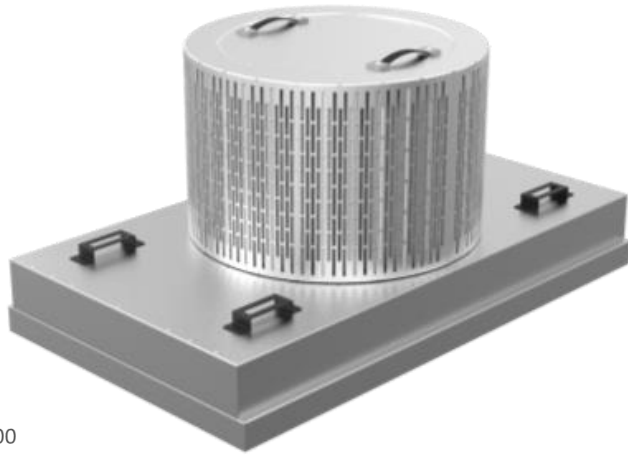
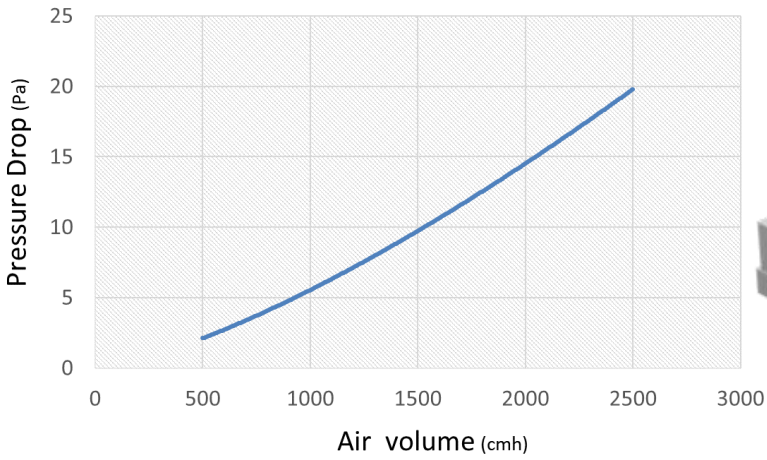


## Features

- FFU에 적용되는 pleated media 기반 Round Type의 필터로 설치 시 추가 구조물이 필요 없는 필터입니다.
- 필터 사이즈가 620(w) x 400 (h)로 특정되어 있어 설치공간의 여유가 필요합니다.

<Pressure drop >



<Filter Installation on FFU >

### FFU (Fan Filter Unit) Filter

#### General specification



Filter type	Round type
Frame material	Aluminum
Size[mm]	620 x 400 H
Typical air flow rate	0~2,500m <sup>3</sup> /H
Target gases	NH <sub>3</sub> , Amines Acid (HF, HCl, Cl <sub>2</sub> , NO <sub>x</sub> , SO <sub>x</sub> , H <sub>2</sub> S) VOCs (Toluene, PGMEA, Siloxane) O <sub>3</sub>